

## National Vocational Rehabilitation Managers



### Amanda McBurney

Amanda has worked in both the charity and private sectors and brings her extensive skills and experience to Remploy. Amanda has specialist expertise in acquired musculoskeletal, psychological and brain injuries.



### Tom Cumming

Tom is a professional member and trustee of the Vocational Rehabilitation Association. He has extensive experience in cases of acquired physical and neurological problems resulting from a traumatic injury or illness.

## Training, qualifications and awards

- Professional member of the Vocational Rehabilitation Association
- MSc in Occupational Psychology
- BPS Level A Certificate in Testing
- Graduate member of the British Psychological Society.

- Professional member of the Vocational Rehabilitation Association
- NEBOSH Certificate in Occupational Health and Safety
- Employment Services Job Club advanced course
- Interview techniques training, AIG
- Performance appraisal training, AIG.

## Vocational Rehabilitation Service Managers



### Hannah Giles

Hannah has worked with a wide range of health professionals and partner agencies in order to help clients with condition management and coping strategies. Hannah has specialist experience of mental health conditions in adults.



### Andrea Squires

Andrea has been helping people with complex barriers to find and retain employment with Remploy for the last five years, having previously worked in recruitment. She has specialist experience in helping individuals to develop their basic skills.

## Training, qualifications and awards

- Professional member of the Vocational Rehabilitation Association
  - BPS accredited BSc in Psychology
  - BTEC Level 3, Dyslexia Awareness and Recognition.
- 
- Professional member of the Vocational Rehabilitation Association
  - BTEC in understanding Dyslexia
  - Certificate in Mental Health at Work.

## Vocational Rehabilitation Consultants



### Rod Berlyn

Rod has worked in the public, private and not for profit sectors. Most recently, he has been supporting mental health patients to find and retain employment. Rod has many years' experience in HR management, recruitment and on welfare to work programmes. He was involved in writing the Disability Discrimination Act in 1994.



### Peter Brooke

Peter has over 13 years' experience, having successfully managed a range of personal injury cases. With specialist expertise in finding alternative roles for individuals, Peter also supports people in vocational retraining.



### Colin Cook

Colin has successfully managed a range of personal injury cases. His expertise lies in providing advice, guidance and finding alternative roles for people with complex barriers to work.

## Training, qualifications and awards

- Professional member of the Vocational Rehabilitation Association
  - Diploma in Welfare Studies
  - IOSH Health and Safety qualifications
  - City & Guilds Adult Teaching qualification.
- 
- Professional member of the Vocational Rehabilitation Association
  - NVQ Level 3, Advice and Guidance
  - BTEC Level 3, Dyslexia Awareness and Recognition.
- 
- Professional member of the Vocational Rehabilitation Association
  - LLB (Hons) Law
  - PTTLs Level 3.

## Vocational Rehabilitation Consultants



### Alison Dalziel

Prior to joining Remploy, Alison assisted individuals as a Disability Employment Advisor. Her assessment skills are now being fully utilised in returning people to employment following an accident or ill health. Alison has specialist experience in supporting disabled and disadvantaged people to search for employment.



### Nicky Darton

Since joining Remploy, Nicky has utilised her extensive employment and disability experience to facilitate successful return to work outcomes for some very challenging cases.



### Debra Ellahee

Debra has a wealth of experience gained from working in medical case management and insurance firms. As a registered nurse, Debra has practical experience of supporting people with psychological issues and brain injuries.

## Training, qualifications and awards

- Professional member of the Vocational Rehabilitation Association
- NVQ Level 3, Advice and Guidance
- BPS Level A in Psychometric Testing
- BTEC Level 3, Dyslexia Awareness and Recognition.

- Professional member of the Vocational Rehabilitation Association
- NVQ Level 4 in Guidance
- BTEC Level 3, Dyslexia Awareness and Recognition.

- Professional member of the Vocational Rehabilitation Association
- Professional member of the Case Management Society UK
- Registered General Nurse (RGN)
- Member of the Nursing and Midwifery Council (NMC).

## Vocational Rehabilitation Consultants



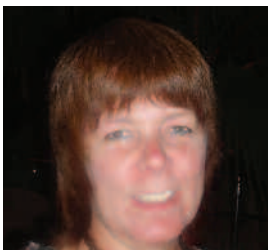
### Kiran Gill

Kiran is a qualified integrative psychotherapist who has worked with a wide range of people with a number of difficulties. By promoting self management, she helps them to overcome their barriers and concerns. Kiran has specialist experience in working with mental health conditions.



### Melissa Hill

As a recent psychology graduate, with several years' work experience, Melissa has a wealth of knowledge backed up with practical experience.



### Diane Howard

Prior to starting at Remploy in 2001, Diane worked for the Department of Work and Pensions for 25 years in various roles. Diane has supported people with disabilities for over 20 years.

## Training, qualifications and awards

- Professional member of the Vocational Rehabilitation Association
- MA Integrative Counselling Practice
- Bsc (Hons) Counselling and Social Policy
- BTEC Level 3, Dyslexia Recognition and Awareness
- Certificate in Psychology.

- Professional member of the Vocational Rehabilitation Association
- Graduate Member of the British Psychological Society
- BPS Level A Certificate in Testing
- MSc Occupational Psychology
- BA (Hons) Psychology.

- Professional member of the Vocational Rehabilitation Association
- BTEC Level 3, Dyslexia Awareness and Recognition
- NVQ Level 4, Advice and Guidance.

## Vocational Rehabilitation Consultants



### Vanessa Moore

Vanessa has worked with Remploy for many years, having previously been employed at Jobcentre Plus. She has specialist experience in supporting people with Dyslexia, and other learning difficulties, to retain and sustain their job roles.



### Lesley Murray

As a registered general nurse, Lesley has over 30 years' experience of working in health. Her experience includes working as a health visitor and conducting independent medical screenings as part of occupational health assessments.



### Jessica Orton

Jess joined Remploy in 2009, after graduating with a degree in Psychology. She has experience in working with a wide range of public and private sector clients, providing targeted, outcome focused support to help individuals to gain and sustain employment.

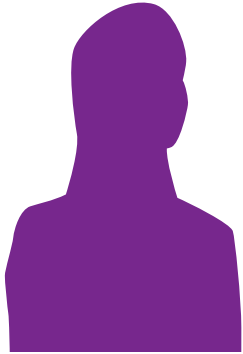
## Training, qualifications and awards

- Professional member of the Vocational Rehabilitation Association
- BTEC Level 3, Dyslexia Awareness and Recognition
- NVQ Level 3 & 4, Advice and Guidance
- City & Guilds Resettlement Advisor Award
- Employability Coaching Certificate.

- Professional member of the Vocational Rehabilitation Association
- BTEC Level 3, Dyslexia Awareness and Recognition
- NVQ Level 4, Advice and Guidance.

- Professional member of the Vocational Rehabilitation Association
- BSc (Hons) Psychology
- Graduate member of the British Psychological Society.

## Vocational Rehabilitation Consultants



### Karen Parkinson

Karen has extensive experience of helping people to overcome barriers to employment and has spent the last year working on an Individual Placement and Support project in the South of England.



### Sarah Pearson

With over eight years' experience in occupational rehabilitation, Sarah provides assessment and case management enabling people to remain in, or access alternative work. Sarah has specialist experience of psychometric testing analysis.



### Susannah Robertson

As a registered Occupational Psychologist, Susannah has practical experience of delivering specialised assessments and advice to support individuals with disabilities and disadvantages to return to, or retain, employment. She also has five years' experience providing consultancy support to public and private sector organisations on workplace stress and wellbeing.

## Training, qualifications and awards

- Professional member of the Vocational Rehabilitation Association
  - Graduate member of the British Psychological Society
  - Professional accredited member of the Counselling Society
  - BPS accredited BSc (Hons) Psychology
  - Integrated Advanced Professional Diploma in Counselling and Psychotherapy.
- 
- Professional member of the Vocational Rehabilitation Association
  - Registered and Chartered Occupational Psychologist
  - Associate Fellow of The British Psychological Society
  - Certified Disability Management Professional (CDMP).
- 
- Professional member of the Vocational Rehabilitation Association
  - Registered and Chartered Occupational Psychologist
  - MSc in Occupational Psychology
  - Level A and Level B (intermediate) competency in Occupational Testing
  - Chartered member of the British Psychological Society.

## Vocational Rehabilitation Consultants



### Fiona Rumney

Fiona has over 25 years' employment support experience with Remploy and the Department for Work and Pensions. For the past 15 years, Fiona has specialised in supporting disabled people to gain, and retain, sustainable employment.



### Margaret Russell

Margaret has been involved in major recruitment campaigns for the Inland Revenue, Scottish Gas, Sky and Standard Life. Margaret has specialist experience in working with employers to achieve their goals.



### Jacqui Taylor

Jacqui has assisted people with mental health conditions into employment and has also delivered mental health training to many large employers. Jacqui is trained in the Pacific Institute's STEPS method.

## Training, qualifications and awards

- Professional member of the Vocational Rehabilitation Association
  - NVQ Level 3, Information and Guidance
  - BTEC Level 3, Dyslexia Recognition and Awareness
  - Certificate in Mental Health at Work
  - Certificate in Systematic Instruction Training.
- 
- Professional member of the Vocational Rehabilitation Association
  - NVQ Level 3, Information and Guidance
  - BTEC Level 3, Dyslexia Awareness and Recognition
  - A1 Assessor Award
  - Employability Coaching Certificate.
- 
- Professional member of the Vocational Rehabilitation Association
  - CIPD Core Personnel and Development Qualification
  - Certificate in Community Mental Health
  - BTEC Level 3, Dyslexia Awareness and Recognition
  - NVQ Level 3, Advice and Guidance.

## Vocational Rehabilitation Consultants



### Paula Taylor

Paula has worked for Remploy for over 20 years and is highly experienced in assisting disabled and disadvantaged individuals. She has specialist expertise in developing individuals' basic skills, identifying and implementing adjustments within existing roles and finding and sustaining employment in alternative roles, supporting both the individual and their employer.



### Edwin Van Der Pol

Edwin has a wealth of experience in supporting and retaining people in employment, following ill health or disability. He also has experience in conducting vocational assessments and The Equality Act 2010 compliance.



### Lisa Whittleton

Lisa has a background in the public sector, providing career coaching and conducting research into stress and wellbeing in the workplace. She also has experience in the recruitment industry, specifically providing support in CV writing, and interview skills.

## Training, qualifications and awards

- Professional member of the Vocational Rehabilitation Association
- BTEC Level 3, Dyslexia Awareness Advanced Award.

- Professional member of the Vocational Rehabilitation Association
- Certificates (CDMP) Return to Work Needs Assessments and Return to Work Coordination
- NVQ Level 3, Advice and Guidance
- A Level in Counselling
- BTEC Level 3, Dyslexia Vocational Evaluation.

- Professional member of the Vocational Rehabilitation Association
- Graduate member of the British Psychological Society
- BPS Level A Certificate in Testing
- MSc Occupational Psychology
- BSc (Hons) Psychology.